

Tension Load Cell



SPECIAL FEATURES

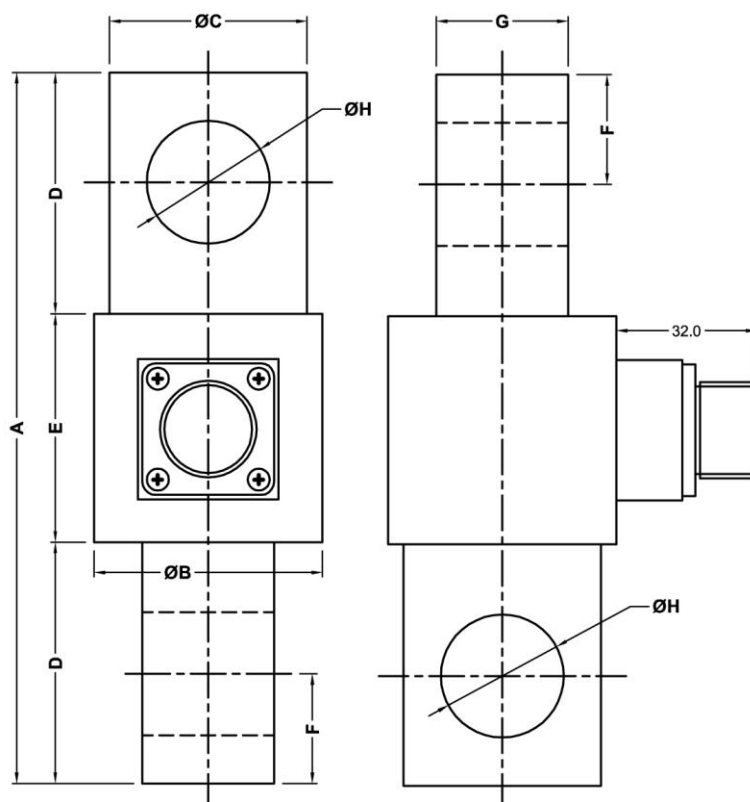
- High Accuracy
- Excellent Linearity
- Ultra Precision
- High Repeatability
- Easy to Install
- Temp Compensated
- Wide Range
- Good Reliability
- Robust Body

SPECIFICATION

Model	SP - 1000
Rated Load Capacity	0-2, 3, 5, 10, 15, 20 Tonne
Rated Output Sensitivity	1mV/V \pm 0.5%
Input Resistance	350 \pm 10 Ohms
Output resistance	350 \pm 5 Ohms
Insulation Resistance	> 1000 Mega Ohms
Humidity Rating	Max 95% RH
Excitation Voltage	10 to 15 Volts DC/AC (RMS)
Non Linearity	\pm 0.1% of Rated Output
Hysteresis	\pm 0.1% of Rated Output
Creep	\pm 0.1% of Rated Output
Non Repeatability	\pm 0.1% of Rated Output
Zero Balance	\pm 5% of Rated Output
Operatable Temperature Range	-20°C to 65°C
Compensated temperature Range	0°C to 55°C



Temperature Effect on Zero	0.01% of Rated Output/°C
Temperature Effect on Output	0.01% of rated Output /°C
Over load rating, Safe	150% of Rated Capacity
Over load rating (Ultimate)	200% of Rated Capacity
Maximum Side Load Allowed	1% of Rated Capacity



Dimensions

CAPACITY	A	ØB	ØC	D	E	F	G	ØH
2, 3, 5 Tonne	162.0	Ø52.0	Ø45.0	55.0	52.0	25.0	30.0	Ø28.0
10 Tonne	210.0	Ø65.0	Ø55.0	75.0	60.0	35.0	40.0	Ø38.0
15, 20 Tonne	280.0	Ø87.0	Ø75.0	105.0	70.0	50.0	50.0	Ø52.0

*Specification subject to change without notice



Synopsis Techno Instruments

409/B-Wing, Kemp's Plaza, Chincholi Bunder, Malad (W), Mumbai, India, Pin - 400 064

Contact : +91 22 400 30 704 /06 Email : admin@synapsistechno.in,

www.synapsistechno.in